



Gate of Purity Shintoism

Vermilion-painted Wood

Japanese maple
Acer palmatum

Set deep within the forest, the Shinto pavilion marks the threshold between human and nature. A path of fine white granite gravel winds toward a vermillion timber gate — a reinterpretation of the torii, simple yet monumental. Passing through, visitors enter a clearing where light filters through leaves onto the pale stone ground. The pavilion itself is minimal — a posture of openness more than enclosure. Here, architecture disappears, and reverence becomes awareness of the world itself. The experience is purity through simplicity — the sacred found in the act of passing through.

Chamber of Silence Buddhism

Dali White Marble

Gold Leaf Clad Interior

Bodhi Tree
Ficus religiosa



Mountain of Renewal Hinduism

Red Indian Granite

Frangipani
Plumeria



The Hindu pavilion rises as a mountain of stone — stacked red granite blocks forming an endless cycle of creation and rebirth. Each element interlocks with the next, intricate yet balanced, echoing the cosmic rhythm of life. Openings between stones allow shafts of light to dance within, enlivening the sacred geometry. The spiraling path toward it, made of the same granite, scatters with fine dust and petals, symbolizing the eternal dance of energy and transformation that defines Hindu thought. The experience is both monumental and tender.

Geometry of Infinity Islam

White Marble (Makrana)

White Marble (Makrana), Red Sandstone (Jordan),
Black Basalt (Syria) Mosaic Interior

Date Palm
Phoenix dactylifera



Walls of Memory Judaism

Jerusalem Limestone
(Meleke / Mizzi Ahmar)

Gold Leaf Clad Aluminium Dome

Pomegranate Tree
Punica granatum



Carved from golden limestone of Jerusalem, the pavilion rises as four cracked walls enclosing a luminous golden dome. The fissures in the stone invite visitors to leave written prayers — messages of memory and hope. The space below is intimate yet communal, evoking the timeless gathering of a synagogue. Light filters softly across the textured surfaces, grounding visitors in continuity and endurance. The approach path, laid with uneven limestone pavers, feels ancient underfoot — a reminder that faith, like stone, is shaped by time, wear, and human touch.

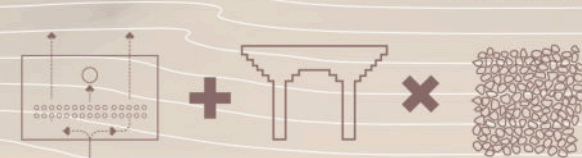
Pilgrimage

Lookout

Pavilion of Flow Taoism

Brushed Stainless Steel Pipes

Willow Tree
Salix alba



The Taoist pavilion breathes between mass and lightness. Metallic frames and reflective glass dissolve into the landscape, merging structure with air. The floor, made of river-polished pebbles, shifts gently underfoot — a reminder of flow and impermanence. Inside, reflections merge sky, forest, and self into one fluid image. The path weaves through mist and water, blurring edges and direction. It is an experience of balance and paradox — heavy and light, solid and transparent, motion and stillness — all existing at once, in harmony.

Circle of Equality Sikhism

Golden onyx marble

Brick
Barley
Hordeum vulgare
Mustard
Sinapis alba



Translucent and radiant, the Sikh pavilion glows from within. Its golden onyx walls form a perfect sphere, equal on all sides — a sphere of balance, equality, and light. At the center, a circular bowl invites communal prayer and song, the echo of voices rising together. Sunlight filters through the onyx, bathing the interior in warm amber tones. The surrounding path, paved with smooth onyx fragments, mirrors the luminous facade. More than a monument, it is a shared space of compassion, strength, and collective spirit.

Temple of Fire Zoroastrianism

Nero Portoro Marble

Haoma
Ephedra gerardian



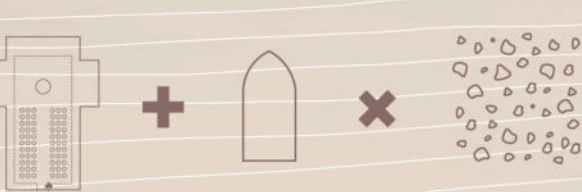
A temple of fire carved in darkness. The Zoroastrian pavilion forms a constellation of black marble arcades veined with gold. Light enters like a flame, gliding across polished surfaces, turning stone into living fire. The ground, paved with the same Portoro cobbles, catches and scatters reflections as if alive. The architecture suggests both containment and ignition — a chamber of illumination born from shadow. Along the path, brass rings shimmer subtly underfoot, leading visitors from the cool shade of the forest into warmth, brilliance, and truth.

Passage of Light Christianity

Stainless Steel Mesh

Polished Colour Stone

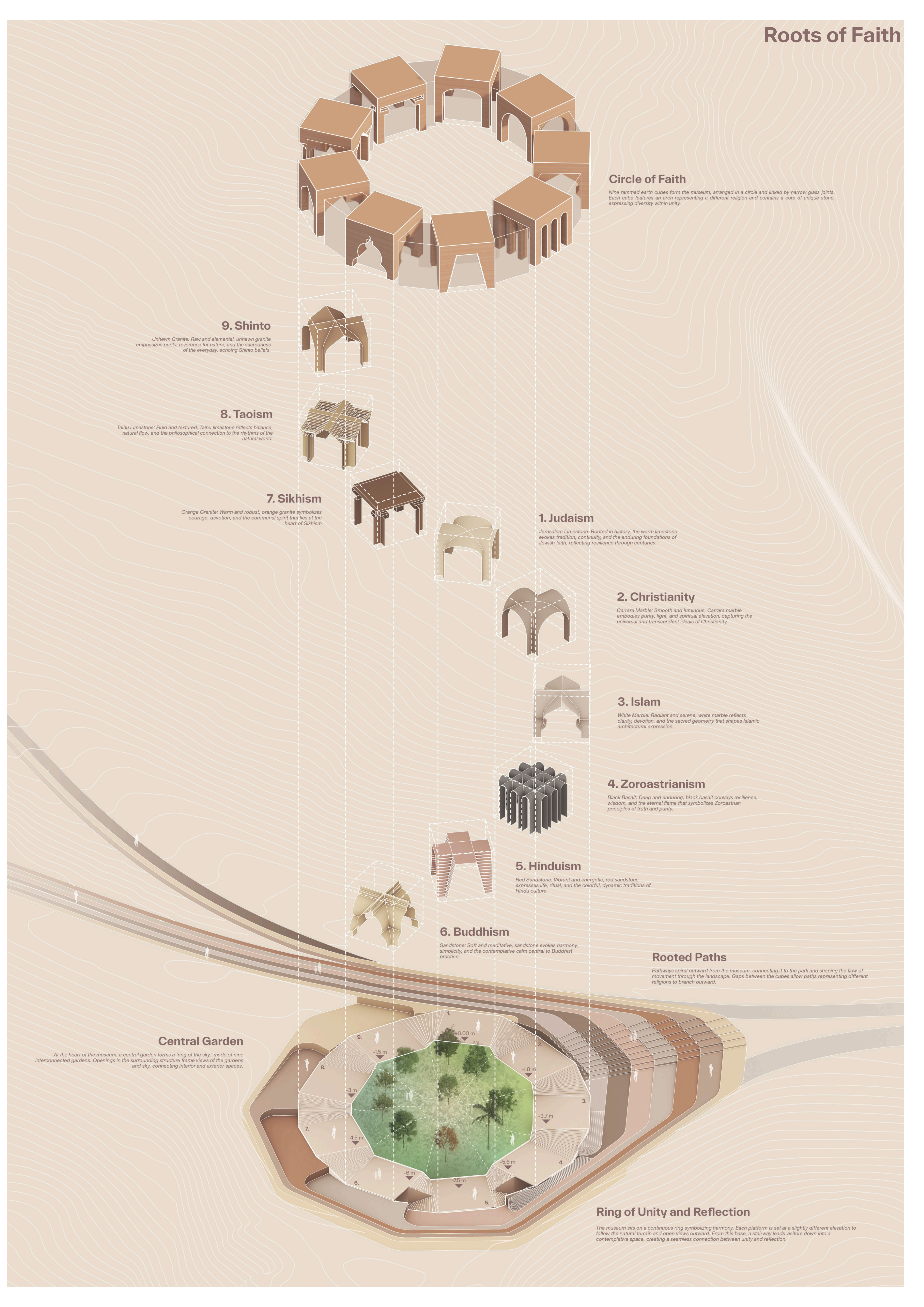
Cypress
Cupressus sempervirens



A cathedral dissolved into light. Designed by Edoardo Tesoldi as a delicate metal mesh, the Christian pavilion suspends fragments of colored Italian marbles — reds, greens, and golds — like stained glass made solid. The spire crinkles at the base and brightens upward, symbolizing resurrection and transcendence. Light breaks through the stone's veins, animating the interior with shifting color. A terrazzo floor of mixed marbles reflects this passage from weight to illumination. The path narrows and opens, guiding visitors from shadow into radiance — a physical metaphor for redemption.



Roots of Faith





Vehicular Circulation

- Car Circulation
- Parking
- Buggy/Bike Routes
- Underground Parking
- E-bike Charging Stations
- Drop off



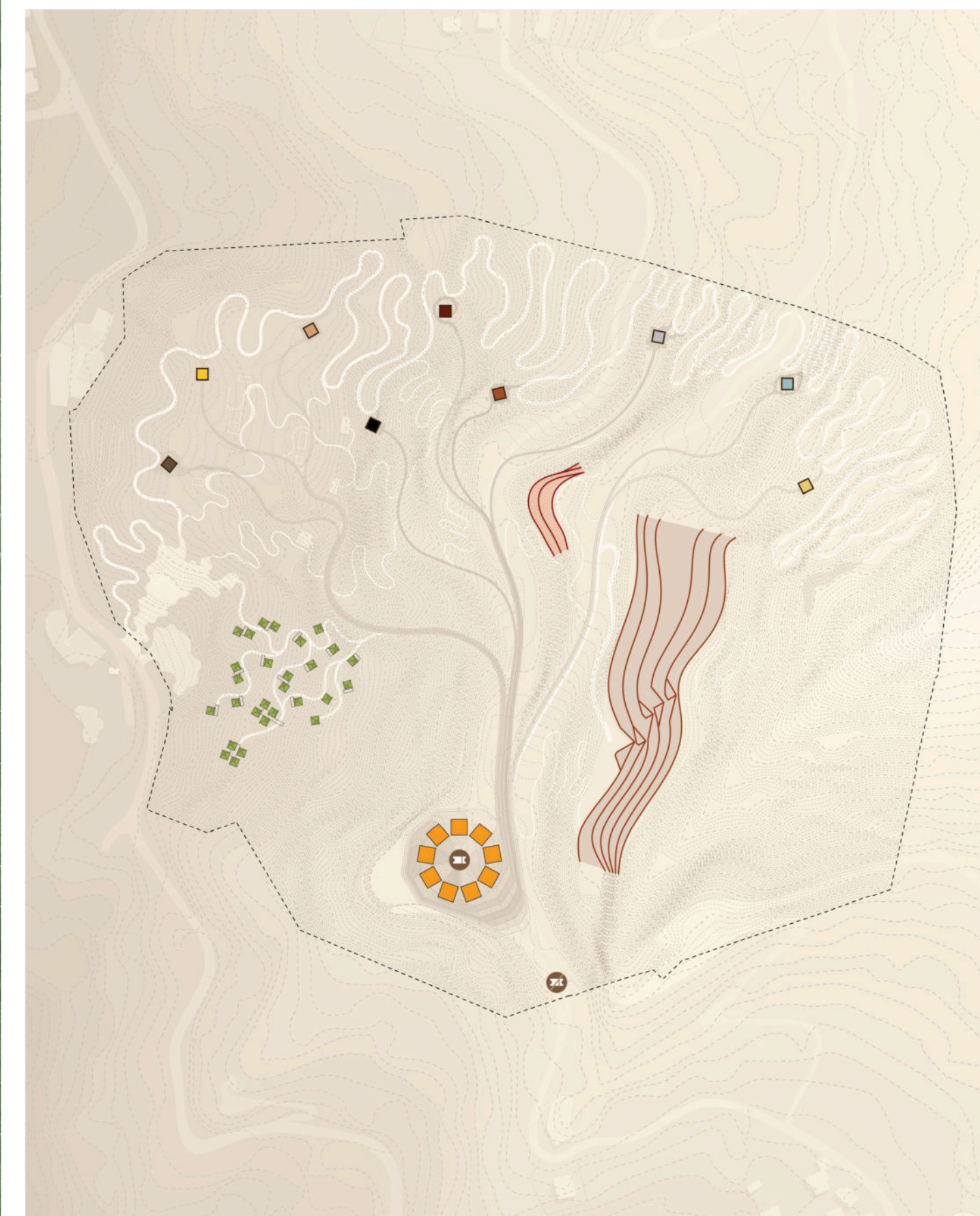
Soft Mobility

- Main Paths
- Secondary Paths
- Tertiary Paths/Hiking Trails
- Plazas



Accessibility

- 5 to 7 % Accessible Slopes
- 12 to 25 % Slopes
- Paths with Steps



Buildings Programming

- Museum
- Restaurant & Café
- Judaism Pavilion
- Zoroastrianism Pavilion
- Buddhism Pavilion
- Wellness Center
- Ticketed Entrance
- Christianity Pavilion
- Hinduism Pavilion
- Taoism Pavilion
- Eco-accommodation
- Non Ticketed Entrance
- Islam Pavilion
- Sikhism Pavilion
- Shinto Pavilion



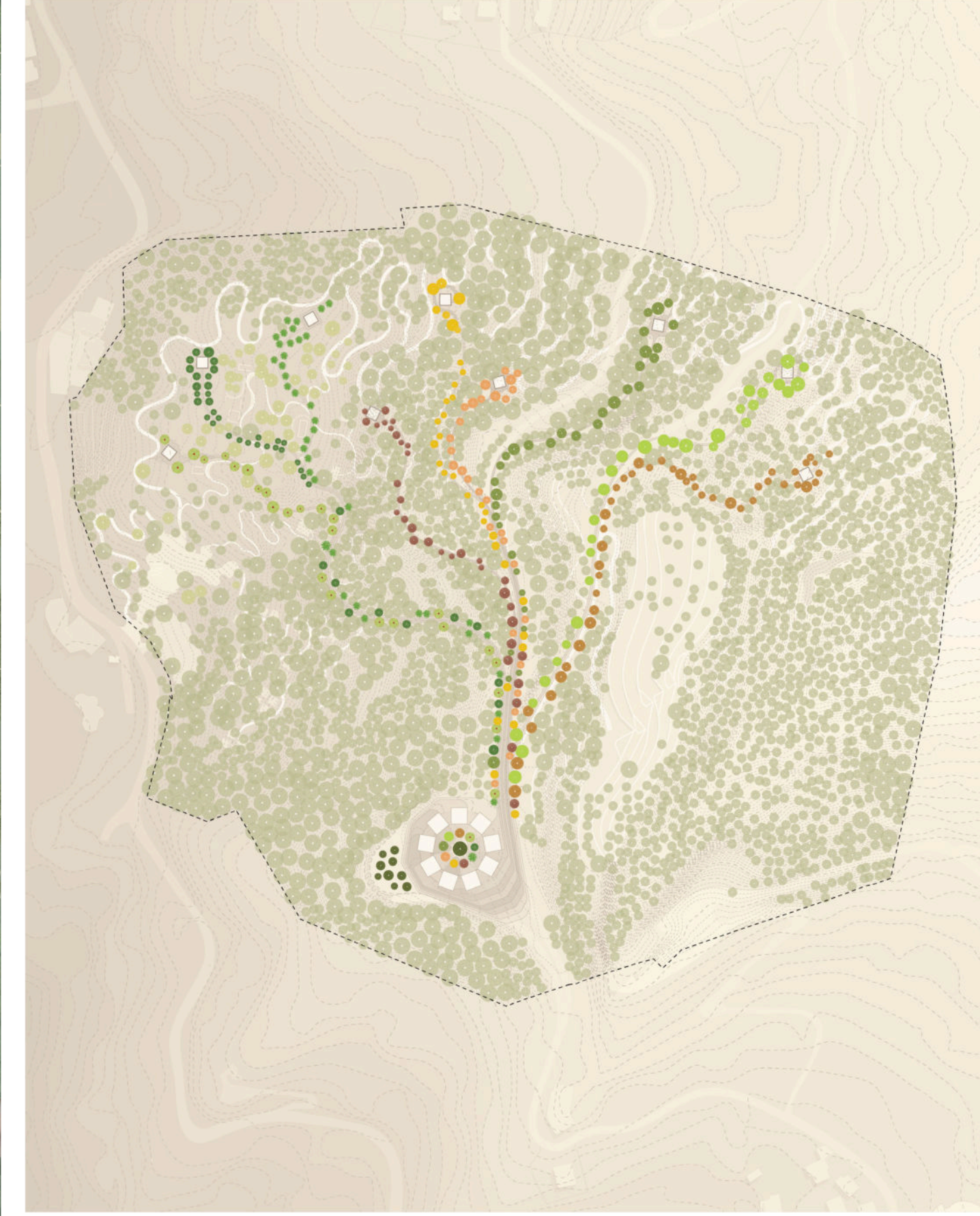
Soft Programming

- Religion-Specific Gardens
- Lookout
- Hiking Trails
- Support Functions
- Entrance Plazas



Phasing

- Phase 01 Construction
- Phase 02 Construction
- Phase 03 Construction



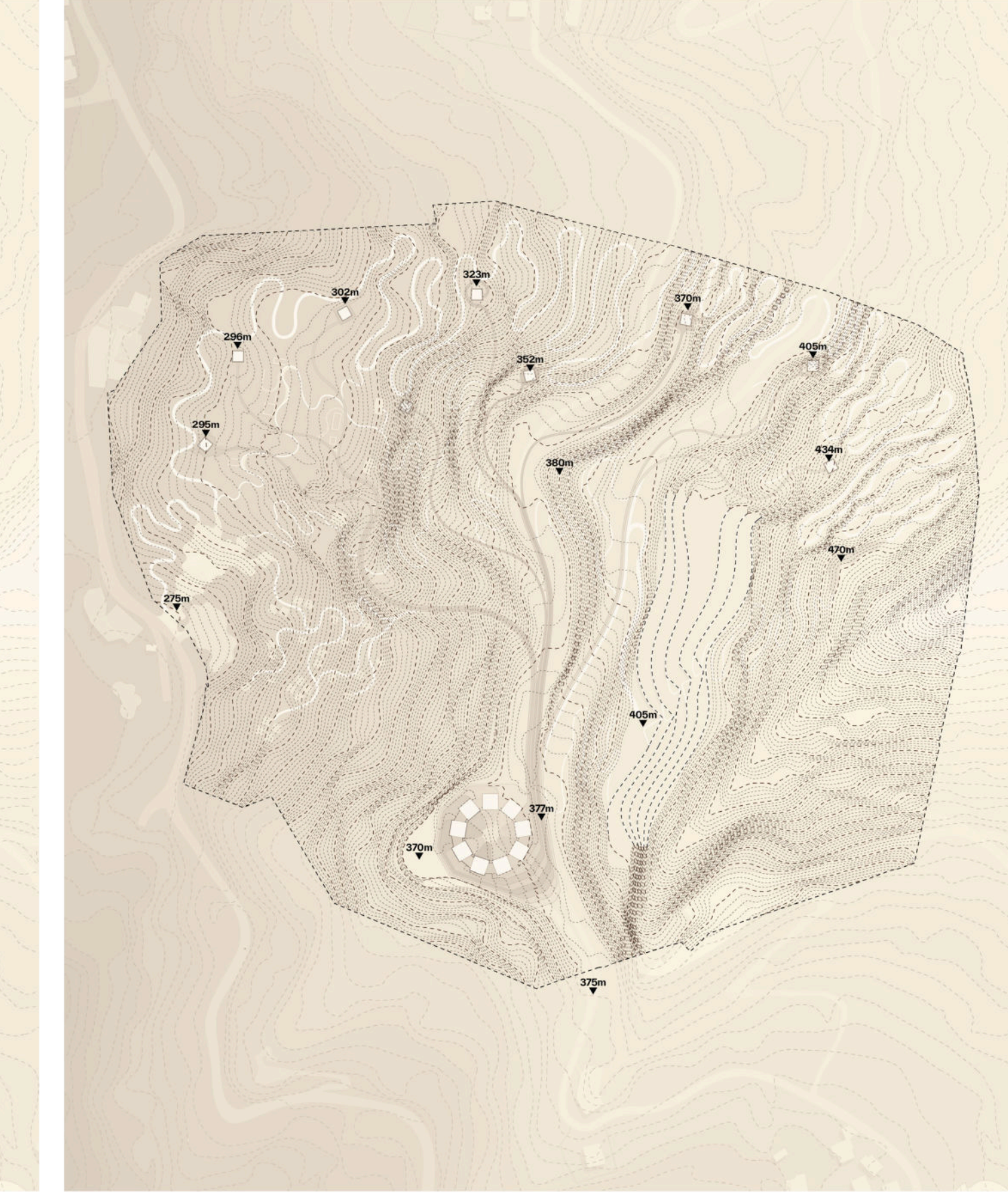
Softscape

- Existing Trees
- Pomegranate Trees
- Haoma
- Bodhi Tree
- Existing Olive Trees
- Cypress Trees
- Sacred Fig Trees
- Japanese Maple Trees
- New Olive Trees
- Date Palms
- Willow Trees



Hardscape

- Compacted Gravel Paths
- Jerusalem Stone
- Marble Cobble
- Marble Stepping Stones
- Permeable Crushed Stone
- Coloured Marble Terrazzo
- Granite Setts
- River Pebbles
- Roads
- Marble Mosaic
- Onyx Chippings
- Gravel



Topography and Levels

- 5m Contours
- 1m Contours
- Elevations



